



# Duevi Outdoor Detectors



South Africa's leading manufacturer and distributor of electronic security products

## Outdoor Wire Free & Wired Dual Infrared Detector



**Duevi outdoor dual head detectors** are innovative volumetric detector for outdoor use. The detection is performed by two passive infrared sensors mounted on two completely independent and adjustable heads, both horizontally and vertically, each one with its own sensitivity setting.

The heads may be combined with logic AND (only the detection of both heads triggers alarm) or logic OR (the detection of any head triggers alarm). With these features, this detector provides great versatility and reliability that removes unwanted alarm events, which often limit the outdoor installation of volumetric detection.

Equipped with tamper protection, the device is programmable by a built-in dip-switch for all programmable options. There is also a test function with led indication for each head, and acoustic buzzer for a simplified installation in low visibility conditions.

The detector can be mounted at heights from 80 to 250 cm. Two lens covers allow one to obtain a curtain effect on both heads if required.



EXTERIOR



INTERIOR

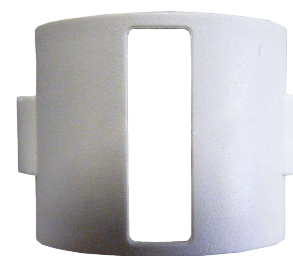
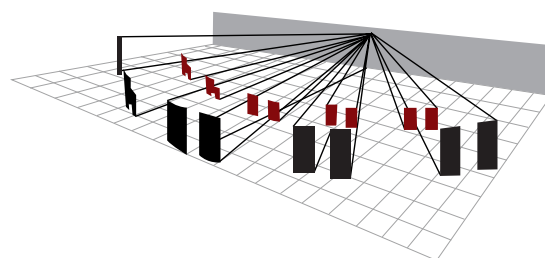
**DUEVI OUTDOOR DUAL HEAD PIR (WIRED)**

**866-D-OPW**

**DUEVI OUTDOOR DUAL HEAD PIR (WIRE FREE)**

**866-D-OPWF**

<b>Detection technology</b>	2 PIR sensors mounted on completely independent & adjustable heads, each one with sensitivity setting
<b>Detection Logic</b>	OR – simple AND – directional AND selectable
<b>Coverage</b>	12m 100° dual PIR mode or 12m 200° single PIR mode 12m dual corridor mode or 24m single bidirectional corridor mode
<b>Power supply</b>	9 VDC lithium or alkaline battery - 866-D-OPWF (Wire free) 9-14 Vdc (26 mA standby – 44 mA alarm) - 866-D-OPW (Wired)
<b>Current consumption</b>	15µA (standby), 10 ma alarm transmission - 866-D-OPWF (Wire free)
<b>Tamper switch</b>	Output activates when either the detector or its cover is removed
<b>Sensitivity</b>	Each PIR has its own adjustable sensitivity pot
<b>Alarm output</b>	Form C - solid state switch: 10V DC0.01A - 866-D-OPW (Wired)
<b>Alarm period</b>	Approx. 2.5 sec
<b>Warm up period</b>	Approx. 1 min.
<b>LED indicator</b>	LED indicator for each PIR head
<b>Operating temperature</b>	-20°C to +55°C
<b>Environmental humidity</b>	95% max.
<b>Mounting height</b>	0.8m - 2.5m
<b>Mounting</b>	Wall mount or pole mount
<b>Additional lens</b>	Corridor lens
<b>Weatherproof</b>	IP54



CORRIDOR LENS



# Duevi Outdoor Detectors



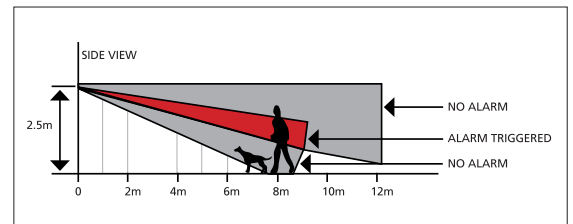
South Africa's leading manufacturer and distributor of electronic security products

The Duevi outdoor dual head detectors are ideal either for new installations or for adding to existing installations where outdoor performance, reliability and aesthetics are important. These can be set up in a variety of different ways:



	Application	how it works	PIR head setup	and or logic
<b>Harsh Environment Mode</b>	Avoid false alarms in harsh outdoor environments.	Overlapping detection areas and <AND> logic create quad pyro detector.	Overlapping	<AND>
<b>Wide Area mode</b>	Cover largest possible area.	Heads covering different areas, and <OR> logic replicates 2 standalone detectors.	Spread to cover maximum area.	<OR>
<b>Pet friendly mode</b>	Get volumetric PIR coverage in areas with large pets.	Heat source must trigger both PIRs, pets can't trigger upper PIR.	Upper head directed outwards, lower head terminating on ground.	<AND>
<b>Perimeter mode</b>	Detect intruder movement along walls, either side of detector.	Any movement in the narrow detection area adjacent to a wall creates violation.	Directed along a wall in opposite directions, with corridor lenses applied.	<OR>
<b>Harsh perimeter mode</b>	Detect intruder movement along wall one side of detector, in environments prone to false alarms.	Any movement that triggers both PIRs creates a violation.	Directed along wall, in same direction, corridor lenses applied.	<AND>
<b>Corner perimeter mode</b>	Detect intruder movement along more than one wall.	Any movement in the narrow detection area adjacent to either wall creates violation.	Mounted in a corner, PIRs directed along 2 walls, corridor lenses applied.	<OR>
<b>Sensitive mode</b>	Optimise detection in sensitive / high security environments	Overlapping detection areas and <OR> logic replicate 2 detectors.	Overlapping	<OR>
<b>Beam and PIR mode</b>	Combine volumetric and point-to-point capabilities to avoid false alarms.		One detector on standard volumetric, other with corridor lens along wall.	<AND>
<b>One-way mode</b>	Allow movement in one direction through a protected area.	Sequence logic allows for triggering of PIRs in one sequence, but not the other.	Covering separate areas.	<AND> with time-delay

## WEATHERPROOF HOUSING



## Duevi 2 Channel Wire Free Receiver

The RX2 is a universal 2-channel, 20-device receiver for the Duevi wire free outdoor detector and has been designed to integrate easily into any new or existing alarm systems. The receiver has 2 zone output relays and trouble output that activates for tamper, low battery and detector supervision.

### DUEVI 2 CHANNEL WIRE FREE RECEIVER

866-D-RX2

<b>Power supply</b>	9-14 Vdc
<b>Wired Outputs</b>	2 Relay outputs 1 supervision output for tamper & low battery
<b>RF selection</b>	433,92 MHz (100 m in open field)

